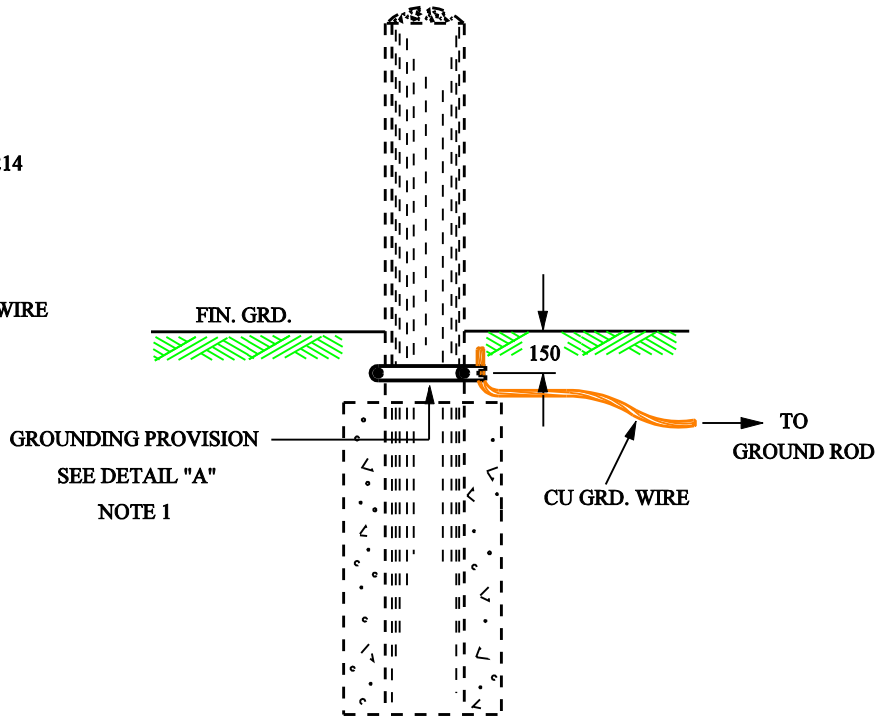


DETAIL "A"



LOCATION	EQUIPMENT	GROUND WIRE
SUBDIVISION	MINI-PAD TRANSFORMER (RESIDENTIAL DRIVEWAY)	2/0 CU
	MINI-PAD TRANSFORMER (STREET/BOULEVARD)	2/0 CU
	3 PH PADMNT. TRANSFORMER PADMOUNT SWITCHGEAR	2/0 CU
PARKING LOT	MINI-PAD TRANSFORMER	2/0 CU
	3 PH PADMNT. TRANSFORMER PADMOUNT SWITCHGEAR	2/0 CU

NOTE:

1. GROUND CONNECTOR MUST BE CLAMPED TO NON-PAINTED SURFACE OF THE GUARD POST.
2. REFER TO STD. 37-380 FOR GUARD POST INSTALLATION.

CHECKED: _____

W. Ron

APPROVED: _____

O. Hill